



PT. UNITED EQUIPMENT INDONESIA

#### OFFICE & WORKSHOP

Jl. Raya Cakung Cilincing Kav. 203  
Jakarta Timur 13910, INDONESIA  
Marketing : +62-812 8866 5222  
Product Support : +62-812 1812 9222  
Customer Service: +62-812 9789 3222  
P : +62-21 4683 3232 (Hunting)  
F : +62-21 461 5466  
UniqCall : 1500 - 163  
www.uniquip.co.id

#### BRANCH OFFICES

MEDAN : +62-821 6683 3222  
PEKANBARU : +62-851 0878 4222  
PALEMBANG : +62-851 0132 9222  
SEMARANG : +62-24 7643 8379  
SURABAYA : +62-31 9914 8851  
PONTIANAK : +62-812 8742 9778  
BANJARMASIN : +62-811 5569 222  
BALIKPAPAN : +62-851 0022 3322  
MAKASSAR : +62-812 9881 0501  
BALI : +62-361 471 1039  
MATARAM : +62-370 756 1897  
KENDARI : +62-401 308 2972  
MANADO : +62-822 8959 0222



FOLLOW US ON : UNIQUIPID

# TRUCK CRANE QY55D<sub>531.1</sub>



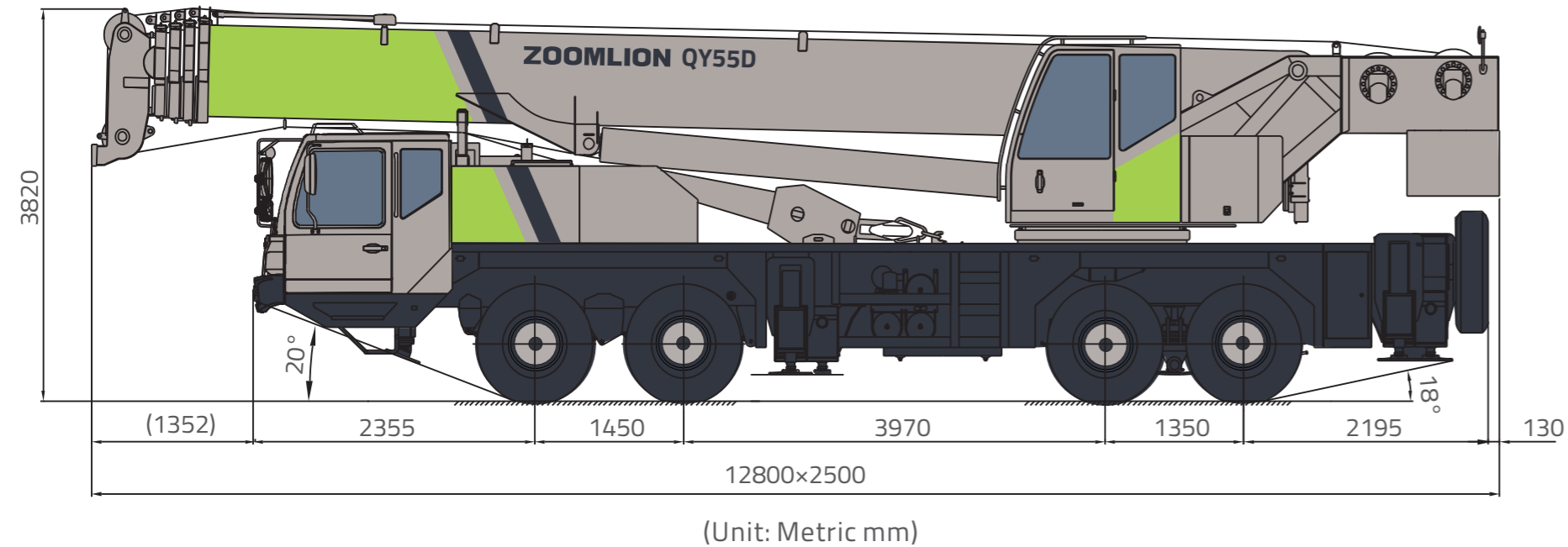
ZOOMLION

## Features

### Lifting capacity

1. Continuously overall promotion makes our lifting capacity of crane be improved once and once again
2. 43 m main boom , two section jibs (9.5m . 16m)
3. Optimized central slewing position increases the lifting capacity of the crane over rear
4. Large outrigger span improves the working stability of the crane greatly
5. Adopt internationally advanced structure analysis and calculation methods to develop the lifting capacity of crane deeply
6. Leading boom manufacturing process in trade.

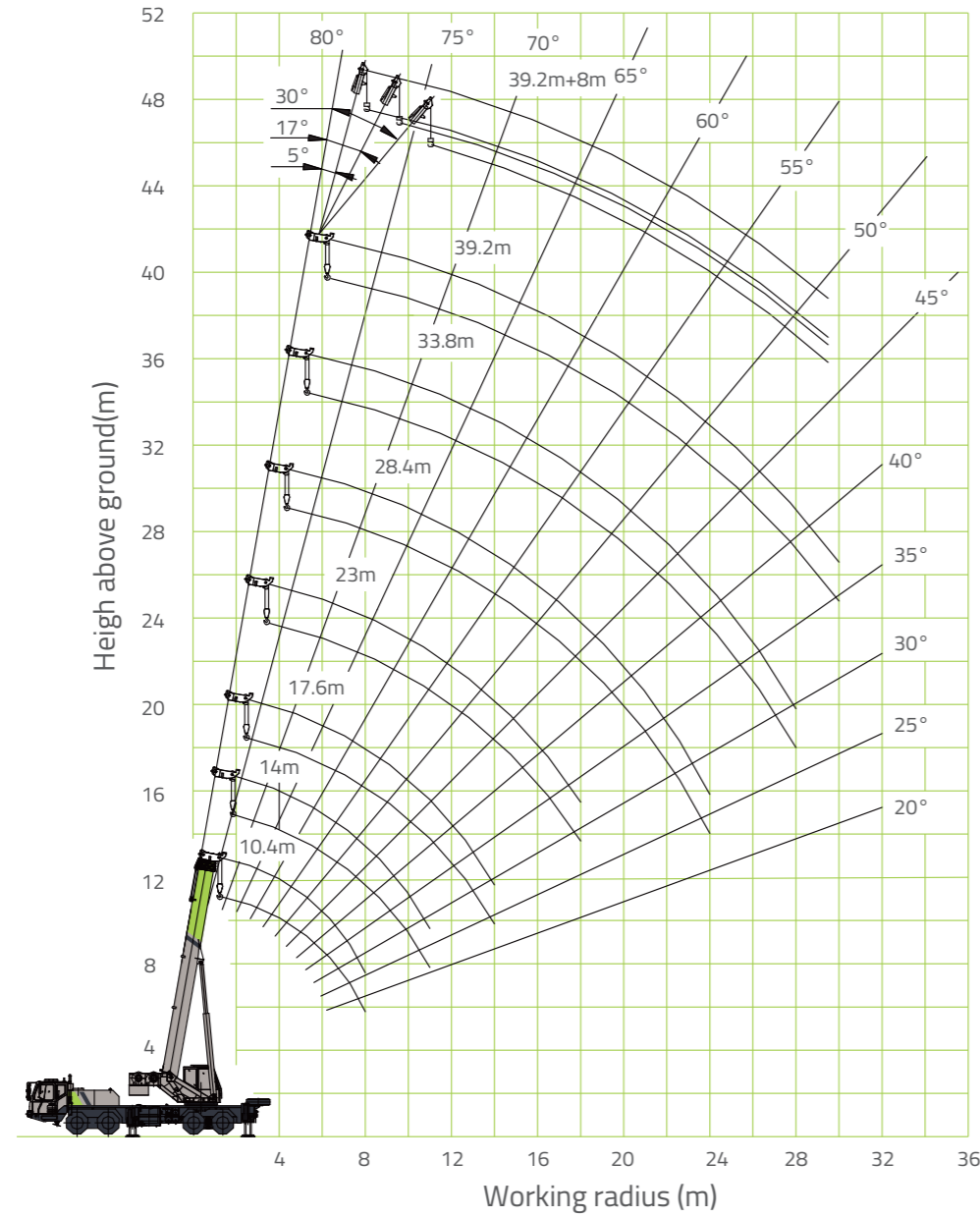
## Overall View



## Technical Data

	Item	Unit	Value	Remarks
Working performance	Max. rated lifting capacity	Kg	55000	
	Max. load moment of basic boom	kN.m	2009	
	Max. load moment of main boom (fully extended)	kN.m	1050	
	Max. lifting height of basic boom	m	12.6	These parameters do not include deflection of main boom and jib
	Max. lifting height of main boom (fully extended)	m	43.6	
	Max. lifting height of jib	m	58	
Working speeds	Max. hoist rope speed (Main winch)	m/min	120	
	Max. hoist rope speed(Auxiliary winch)	m/min	120	
	Boom derricking up time	s	50	
	Boom telescoping out time	s	95	
	Slewing speed	r/min	0~2.2	
Driving	Max. height above sea level	m	2000	
	Max. driving speed	km/h	76	
	Max. gradeability	%	40	
	Min. turning diameter	m	≤24	
	Min. ground clearance	mm	260	
	Oil consumption per hundred kilometer	L	43	
Mass	Deadweight in driving condition	kg	42000	
	Complete vehicle kerb mass	kg	41870	
	Front axle load	kg	16000	
	Rear axle load	kg	26000	
Dimensions	Overall dimensions (L×W×H)	mm	13700×2800×3650	
	Outrigger spread (L)	m	5.92	
	Outrigger spread (W)	m	Fully extended:7.1m ,Intermediately extended:4.8m	
	Tail slewing radius	mm	3900	
	Main boom length	m	11.4~43.0	
	Main boom angle	°	-2~80	
	Jib length	m	9.5, 16.0	Low-mounted, open-type
	Offset	°	0, 30	

# Lifting Height Chart



# Lifting Capacity Tables

Table 1

Unit: Metric kg

Working radius (m)	Main boom (m)						
	Outriggers and telescoping cylinder I fully extended, over sides and over rear						
	11.4	15.3	19.3	25.2	31.1	37.0	43.0
3.0	55000	45000	35000				
3.5	51000	45000	35000				
4.0	48000	45000	35000	25000			
4.5	45000	43000	32500	25000			
5.0	41000	40000	30000	25000			
5.5	36000	36000	28000	24000	17500		
6.0	32500	32500	26500	22500	17500		
6.5	29500	29500	25000	21000	17500		
7.0	26500	26500	23500	20000	17500	14000	
7.5	23500	23500	22000	19000	16700	13500	
8.0	21000	21000	21000	18000	16000	13000	
9.0	16500	16500	16500	16500	14500	12200	9500
10.0		13500	13500	14500	13500	11500	9300
11.0		11000	11000	12000	12500	10700	9000
12.0		9000	9000	10000	10900	10100	8500
14.0			6300	7300	8100	8500	7500
16.0			4400	5400	6100	6500	6700
18.0				4000	4700	5100	5400
20.0				3000	3600	4000	4300
22.0				2200	2800	3200	3500
24.0					2100	2500	2800
26.0					1550	1950	2200
28.0						1500	1750
30.0						1100	1350
32.0							1000
I	0	3.9	7.9	7.9	7.9	7.9	7.9
II	0	0	0	5.9	11.8	17.7	23.7
Reeving	12	10	8	6	4	4	3
Hook	55t hook						

Table 2

Unit: Metric kg

Working radius (m)	Main boom (m)					
	Outriggers fully extended and telescoping cylinder I intermediately extended, over sides and rear					
	11.4	15.3	21.2	27.1	33.0	39.0
3.0	55000	45000	25000			
3.5	51000	45000	25000			
4.0	48000	45000	25000			
4.5	45000	43000	25000	17500		
5.0	41000	40000	25000	17500		
5.5	36000	36000	25000	17500		
6.0	32500	32500	25000	17500	14000	
6.5	29500	29500	25000	17500	14000	
7.0	26500	26500	25000	17500	13500	
7.5	23500	23500	25000	17500	13000	9500
8.0	21000	21000	23000	17000	12500	9500
9.0	16500	16500	18500	16000	11500	9500
10.0		13500	15100	15100	10500	9000
11.0		11000	12500	13200	9700	8500
12.0		9000	10500	11200	9000	8000
14.0			7700	8400	7800	7000
16.0			5800	6400	6800	6100
18.0			4400	5000	5400	5400
20.0				3900	4300	4600
22.0				3100	3400	3700
24.0					2700	3000
26.0					2200	2500
28.0					1700	2000
30.0						1600
32.0						1250
I	0	3.9	3.9	3.9	3.9	3.9
II	0	0	5.9	11.8	17.7	23.7
Reeving	12	9	6	4	4	3
Hook	55t hook					

## Lifting Capacity Tables

Table 3 Unit: Metric kg

Working radius (m)	Main boom (m)				
	Outriggers fully extended and telescoping cylinder I completely retracted, over sides and over rear				
	11.4	17.3	23.2	29.1	35.1
3.0	55000	25000			
3.5	51000	25000	17500		
4.0	48000	25000	17500		
4.5	45000	25000	17500		
5.0	41000	25000	17500	14000	
5.5	36000	25000	17500	14000	
6.0	32500	25000	17000	13500	
6.5	29500	25000	16500	12900	9500
7.0	26500	25000	16000	12300	9500
7.5	23500	24000	15500	11800	9500
8.0	21000	23000	15000	11300	9500
9.0	16500	19000	14000	10400	9200
10.0		15700	13000	9600	8500
11.0		13000	12000	8900	7800
12.0		8200	11500	8300	7300
14.0			8800	7300	6300
16.0			6800	6400	5500
18.0			5400	5700	4900
20.0				4700	4300
22.0				3800	3900
24.0				3100	3400
26.0					2800
28.0					2300
30.0					1900
32.0					
I	0	0	0	0	0
II	0	5.9	11.8	17.7	23.7
Reeving	12	6	4	4	3
Hook	55t hook				

Table 4 Unit: Metric kg

Working radius (m)	Main boom (m)						
	Outriggers intermediately extended and telescopic cylinder I completely extended, over sides and over rear						
	11.4	15.3	19.3	25.2	31.1	37.0	43.0
3.0	50000*	45000*	35000				
3.5	50000*	45000*	35000				
4.0	45000*	41000*	35000	25000			
4.5	38000	37000	32500	25000			
5.0	30000	29500	29500	25000			
5.5	24500	24000	23800	24000	17500		
6.0	20500	20000	19700	21200	17500		
6.5	17500	17000	16700	18000	17500		
7.0	15000	14500	14300	15600	16500	14000	
7.5	13000	12500	12300	13600	14400	13500	
8.0	11500	11000	10800	12000	12800	13000	
9.0	9000	8500	8300	9500	10200	10700	9500
10.0		6700	6500	7600	8300	8800	9200
11.0		5300	5100	6200	6900	7300	7700
12.0		4200	4000	5000	5700	6100	6500
14.0			2400	3400	4000	4400	4700
16.0			1200	2200	2800	3200	3500
18.0				1300	1900	2300	2600
20.0					1200	1600	1900
22.0							1300
24.0							
26.0							
I	0	3.9	7.9	7.9	7.9	7.9	7.9
II	0	0	0	5.9	11.8	17.7	23.7
Reeving	12	9	8	6	4	4	3
Hook	55t hook						

## Lifting Capacity Tables

Table 5 Unit: Metric kg

Working radius (m)	Main boom (m)					
	Outriggers and telescoping cylinder I intermediately extended, over sides and over rear					
	11.4	15.3	21.2	27.1	33.0	39.0
3.0	50000	45000	25000			
3.5	50000	45000	25000			
4.0	45000	41000	25000			
4.5	38000	37000	25000	17500		
5.0	30000	29500	25000	17500		
5.5	24500	24000	25000	17500		
6.0	20500	20000	21600	17500	14000	
6.5	17500	17000	18400	17500	14000	
7.0	15000	14500	15900	16800	13500	
7.5	13000	12500	13900	14800	13000	9500
8.0	11500	11000	12300	13100	12500	9500
9.0	9000	8500	9800	10500	11000	9500
10.0		6700	7900	8600	9100	9000
11.0		5300	6500	7200	7600	8000
12.0		4200	5400	6000	6400	6800
14.0			3700	4300	4600	5000
16.0			2500	3100	3400	3700
18.0			1600	2200	2500	2800
20.0				1500	1800	2100
22.0					1300	1600
24.0						
26.0						
I	0	3.9	3.9	3.9	3.9	3.9
II	0	0	5.9	11.8	17.7	23.7
Reeving	12	10	6	4	4	3
Hook	55t hook					

Table 6 Unit: Metric kg

Working radius (m)	Main boom (m)				
	Outriggers intermediately extended and telescoping cylinder I completely retracted, over sides and over rear				
	11.4	17.3	23.2	29.1	35.1
3.0	50000	25000			
3.5	50000	25000	17500		
4.0	45000	25000	17500		
4.5	38000	25000	17500		
5.0	30000	25000	17500	14000	
5.5	24500	25000	17500	14000	
6.0	20500	22200	17000	13500	
6.5	17500	19100	16500	12900	9500
7.0	15000	16600	16000	12300	9500
7.5	13000	14600	15500	11800	9500
8.0	11500	12900	13600	11300	9500
9.0	9000	10300	11000	10400	9200
10.0		8400	9100	9500	8500
11.0		7000	7600	8000	7800
12.0		5900	6400	6800	7100
14.0		4200	4700	5000	5300
16.0			3500	3800	4100
18.0			2600	2900	3200
20.0				2200	2500
22.0				1600	1900
24.0				1200	1400
26.0					
28.0					
I	0	0	0	0	0
II	0	5.9	11.8	17.7	23.7
Reeving	12	6	4	4	3
Hook	55t hook				

Table 7 Unit: Metric kg

Main boom angle (°)	Main boom +Jib(m)			
	43+9.5		43+16	
	0°	30°	0°	30°
80	4500	2150	2800	1000
78	4500	2100	2600	1000
76	4200	2000	2300	1000
74	3800	1950	2150	1000
72	3500	1900	1900	1000
70	3200	1850	1750	950
68	3000	1800	1650	950
66	2700	1750	1550	900
64	2400	1700	1450	850
62	2100	1650	1350	800
60	1800	1500	1250	750
58	1500	1200	1100	700
56	1200	1000	900	600
54	1000	850	750	
52	800	550		
Reeving	1			
Hook	4.5 t hook			